



# Ultra Touch User Manual

---



**Click here to access an up-to-date online version** of this document. You will also find the most recent content as well as expandable illustrations, easier navigation, and search capability.

# Contents

<b>1</b>	<b>Introduction</b>	<b>4</b>
	Box content	4
	Minimum system requirements	4
	• Ports	4
	• Operating system	4
	• Minimum free disk space	4
<b>2</b>	<b>Getting Started</b>	<b>6</b>
	PC/Mac computers	6
	• Connect the USB cable	6
	• USB-A port	6
	• USB-C port	7
	• Set up Seagate Ultra Touch	7
	• Start here	8
	• Register your device	8
	• Download Toolkit	9
	• Install Toolkit	9
	Android mobile devices	10
	• Download Seagate Mobile Touch	10
	• Connect your Android mobile device	10
	• Open Seagate Mobile Touch	11
<b>3</b>	<b>Safely Remove Seagate Ultra Touch From Your Computer and Android Mobile Device</b>	<b>12</b>
	Windows	12
	Mac	12
	• Eject via Finder window	12
	• Eject via Desktop	13
	Android	13
	• Eject via Seagate Mobile Touch	13
<b>4</b>	<b>Optional Formatting and Partitioning</b>	<b>14</b>
	About file system formats	14
	• How to choose the file system format	14
	Manual formatting	15
	• Mac	15
	• macOS version 10.11 and later	15
	• Windows	16
<b>5</b>	<b>Frequently Asked Questions</b>	<b>17</b>
	All users	17

- Problem: My file transfers are too slow ..... 17
- Problem: I have an older computer with USB 2.0 ports ..... 17
- Problem: I must use a USB hub for my USB devices ..... 17
- Problem: The provided USB cables are too short ..... 18
- Problem: I'm receiving file transfer error messages ..... 18
- Windows** ..... **18**
- Problem: The device icon doesn't appear in Computer ..... 18
- Mac** ..... **19**
- Problem: The device icon does not appear on my desktop ..... 19
- Android** ..... **19**
- Problem: The drive does not work on my Android mobile device ..... 19

## **6 Regulatory Compliance ..... 21**

- China RoHS 2 ..... 21
- Taiwan RoHS ..... 22

# Introduction

Seagate Ultra Touch is the ultimate way to store photos, videos, and music from your computer or compatible Android device.

For common questions and answers about your drive, see [Frequently Asked Questions](#) or visit [Seagate customer support](#).

## Box content

- Seagate Ultra Touch
- USB-A (USB 3.0 & 2.0) cable
- USB-C adapter



**Important** — Save your packaging. If you experience problems with your device and want to exchange it, the device must be returned in its original packaging.

## Minimum system requirements

### Ports

Connect your Seagate Ultra Touch to a computer with a USB-A (USB 3.0 or 2.0) or USB-C port.

You can also connect Seagate Ultra Touch to compatible Android mobile devices with a USB-C port. Use the included adapter for the USB-C connection.

### Operating system

- Windows® 7 or higher
- macOS® 10.12 or higher
- Android 8.0 or higher

### Minimum free disk space

- 600MB recommended



# Getting Started

Register Seagate Ultra Touch and start backing up files from your PC/Mac computers and compatible Android mobile devices.

---

## PC/Mac computers

Connect Ultra Touch to your computer and use [Seagate Toolkit](#) to sync folders, so your files are available in both places. Let Toolkit automatically copy files you've deleted to the archive folder on Ultra Touch to prevent lost data.

---

## Android mobile devices

Connect Ultra Touch to a compatible Android mobile device and use the [Seagate Mobile Touch](#) app to easily back up, move, copy, and delete files on Ultra Touch and your mobile device. Click [here](#) for a list of compatible Android devices.

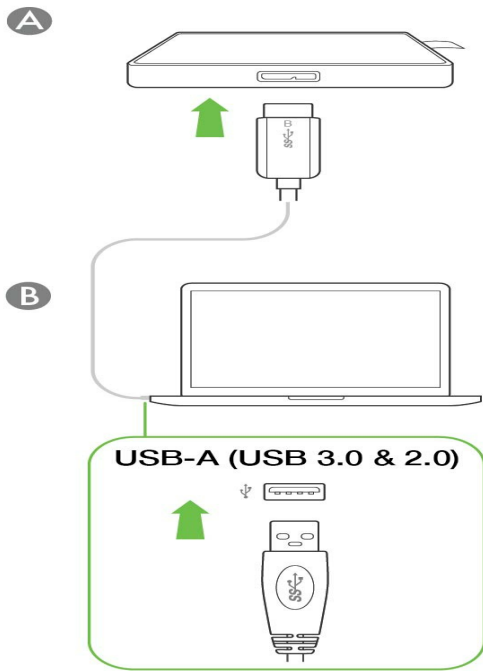
## PC/Mac computers

### 1 Connect the USB cable

Before connecting Ultra Touch, confirm the type of USB port on your computer.

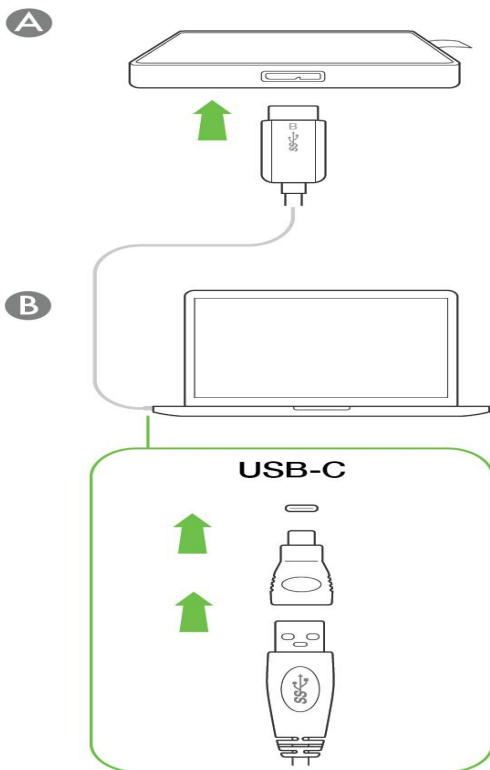
#### USB-A port

Use the Micro B to USB-A cable if your computer has a USB-A port.



## USB-C port

If your computer has a USB-C port, use the Micro B to USB-A cable with the USB-C adapter.



## 2 Set up Seagate Ultra Touch

The setup process lets you:

Register Ultra Touch

Get the most from your drive with easy access to information and support.

Install Toolkit on your computer

Sync folders and files between your computer and Seagate Ultra Touch.

### Learn more about Toolkit

For details on Toolkit features, see the [Toolkit user manual](#).

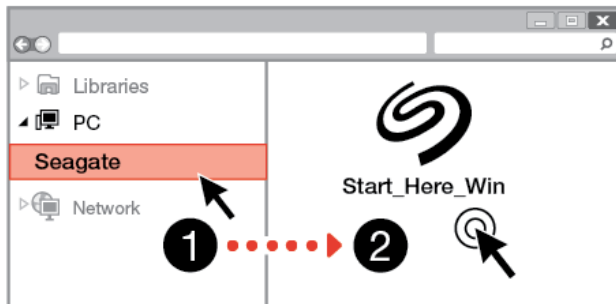


Your computer must be connected to the internet to install and run Toolkit.

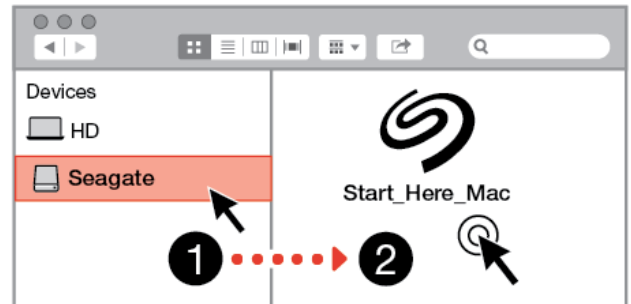
## A Start here

Using a file manager such as Finder or File Explorer, open Ultra Touch and launch [Start Here Win](#) or [Start Here Mac](#).

Windows®



Mac®



## B Register your device

On the Sign Up page, click [Register using your PC or Mac](#). Enter your information and click [Register](#).



### Register

Jane

Doe

jdoe@example.com

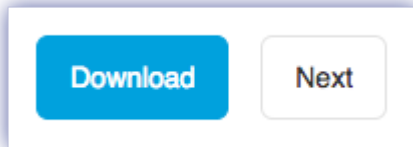
I have read and agree to...

- Terms and Conditions
- Privacy Statement
- Optional Offers

Register

## C Download Toolkit

At the prompt, click the [Download](#) button.



## D Install Toolkit

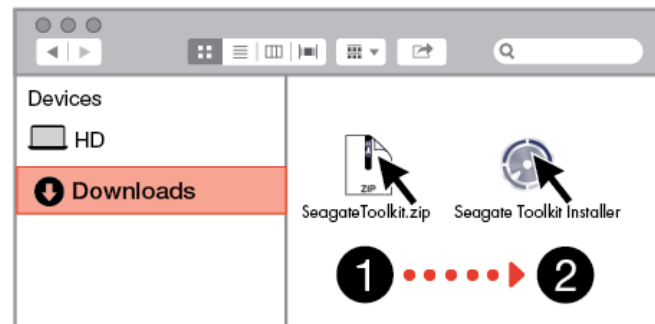
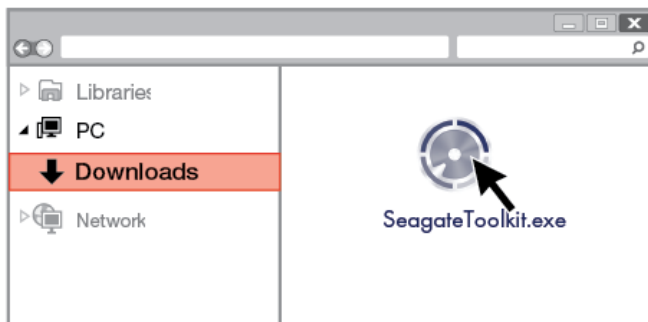
Using a file manager such as Finder or File Explorer, go to the folder where you receive downloads.



Click on the [SeagateToolkit.exe](#) file to launch the application.



Open the [SeagateToolkit.zip](#) file. Click on the [Seagate Toolkit Installer](#) to launch the application.



# Android mobile devices



Your Android mobile device must be connected to the internet to start the setup process.

## 1 Download Seagate Mobile Touch

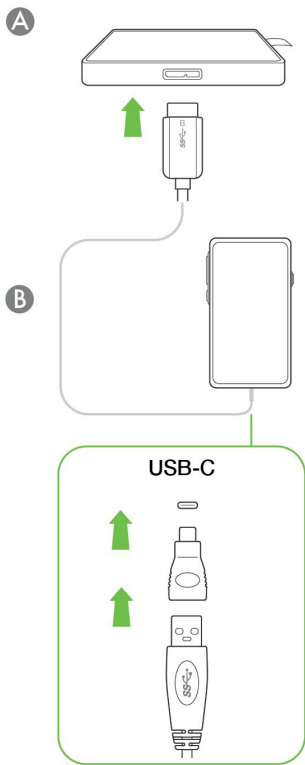
On your Android mobile device, go to the Google Play Store and download the Seagate Mobile Touch app.



Alternatively, scan the following QR code using your Android device to open the Google Play Store:



## 2 Connect your Android mobile device



### 3 Open Seagate Mobile Touch

Once you've downloaded Mobile Touch and connected Seagate Ultra Touch to your Android mobile device, open the app and follow the onscreen instructions to register the drive and begin backing up files.

**Learn more about Seagate Mobile Touch**

For details on Mobile Touch features, see the [Seagate Mobile Touch user manual](#).

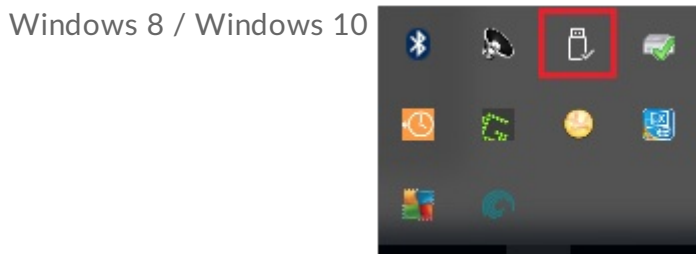
# Safely Remove Seagate Ultra Touch From Your Computer and Android Mobile Device

Always eject a storage drive from your computer before physically disconnecting it. Your computer must perform filing and housekeeping operations on the drive before it is removed. If you unplug the drive without using the operating system's software, your files can become corrupt or damaged.

## Windows

Use the Safely Remove tool to eject a device.

1. Click the Safely Remove icon in your Windows System Tray to view the devices you can eject.



2. If you don't see the Safely Remove Hardware icon, click the Show hidden icons arrow in the system tray to display all icons in the notification area.
3. In the list of devices, choose the device you want to eject. Windows displays a notification when it is safe to remove the device.
4. Disconnect the device from the computer.

## Mac

There are several ways you can eject your device from a Mac. See below for two options.

### Eject via Finder window

1. Open a Finder window.
2. On the sidebar, go to Devices and locate the drive you want to eject. Click the eject symbol to the right of the drive name.
3. Once the device disappears from the sidebar or, the Finder window closes, you can disconnect the interface cable from your Mac.

## Eject via Desktop

1. Select the desktop icon for your device and drag it to the Trash.
2. When the device icon is no longer visible on your desktop, you can physically disconnect the device from your Mac.

## Android

### Eject via Seagate Mobile Touch

You can eject the drive using the Seagate Mobile Touch app.

1. Tap the Navigation icon.
2. Tap the Eject icon next to Seagate Ultra Touch.

# Optional Formatting and Partitioning

Seagate Ultra Touch is preformatted exFAT for compatibility with both PC/Mac computers and Android mobile devices. If you use the drive with only one type of computer, you can optimize file copy performance by formatting the drive in the native file system for your operating system—NTFS for Windows or HFS+ for macOS. If you also use the drive with Android, make certain to use a compatible format such as exFAT.

## About file system formats

**NTFS**—The native file system for Windows. macOS can read NTFS volumes but cannot natively write to them. NTFS is not recommended for connections to compatible Android mobile devices.

**Mac OS Extended (HFS+)**—An Apple file system optimized for macOS 10.12 and earlier. This file system remains the best option for external hard drives and is the only format compatible with Time Machine. Windows cannot natively read or write to HFS+ (journaled) volumes. HFS+ is not recommended for connections to compatible Android mobile devices.

**APFS (Apple File System)**—An Apple file system optimized for solid state drives (SSDs) and flash-based storage systems. Note the following restrictions:

- You cannot use an APFS-formatted disk as your Time Machine backup drive. Format Seagate Ultra Touch to HFS+ if you intend to use it with Time Machine.
- APFS is only supported on macOS 10.13 or later.
- APFS is not recommended for connections to compatible Android mobile devices.

**exFAT**—Compatible with macOS and Windows. exFAT is not a journaled file system, which means it can be more susceptible to data corruption when errors occur or the drive is not disconnected properly from the computer.

**FAT32**—Compatible with macOS and Windows. However, FAT32 is a legacy file system designed for low capacity hard drives and it is not recommended for modern hard drives or operating systems. A FAT32 partition can reach up to 32GB when formatted on a Windows PC.

## How to choose the file system format

---

**Use NTFS if:**

---

---

...you connect the storage device to Windows computers, and you don't need to allow a Mac to write to the disk. NTFS is not recommended for connections to compatible Android mobile devices.

---

#### Use HFS+ if:

...you connect the storage device to Mac computers, and you don't need to allow a Windows computer to read or write to the disk. HFS+ is the only format compatible with Time Machine. HFS+ is not recommended for connections to compatible Android mobile devices.

---

#### Use APFS if:

...you connect the storage device to Mac computers, and you don't need to allow a Windows computer to read or write to the disk. Do not use APFS if you intend to use Seagate Ultra Touch with Time Machine, or if your computer is not running macOS 10.13 or later. APFS is not recommended for connections to compatible Android mobile devices.

---

#### Use exFAT if:

...you need to allow both Mac and Windows computers to read and write to the disk. exFAT is recommended when connecting to compatible Android devices.

---

#### You can use FAT32 if:

...you connect the storage device to older Windows and Mac computers. FAT32 is not recommended for modern operating systems and computers.

---

## Manual formatting

Use the steps below to manually format and partition a storage device.

**!** **Formatting erases everything on the storage device.** Seagate highly recommends that you **back up all data** on your storage device before performing the steps below. Seagate is not responsible for any data lost due to formatting, partitioning, or using a Seagate storage device.

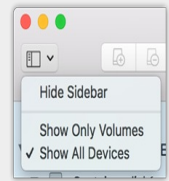
## Mac

### macOS version 10.11 and later

1. Open the Finder and go to [Applications > Utilities > Disk Utility](#).
2. In the sidebar to the left, select your Seagate Ultra Touch.



**macOS starting version 10.13**—Make sure to select the disk and not just the volume. If you don't see two entries listed in the sidebar, change the view in disk utility to show both the drive and the volume. The view button is in the upper left side of the Disk Utility window. Change the view to Show All Devices. This feature was introduced in macOS 10.13 and is not available in 10.11 or 10.12.



3. Select [Erase](#).
4. A dialog box opens. Enter a name for the drive. This will be the name displayed when the drive mounts.
5. For Format, select [OS X Extended \(Journaled\)](#).
6. For Scheme, select [GUID Partition Map](#).
7. Click [Erase](#).
8. Disk Utility formats the drive. When it's finished, click [Done](#).

## Windows

1. Make sure the storage device is connected to and mounted on the computer.
2. Go to Search and then type diskmgmt.msc. In the search results, double-click [Disk Management](#).
3. From the list of storage devices in the middle of the Disk Management window, locate your Seagate device.
4. The partition must be available to format. If it is currently formatted, right click on the partition and then choose [Delete](#).
5. To create a new partition, right click on the volume and select [New Simple Volume](#). Follow the on-screen instructions when the New Simple Volume Wizard appears.



# Frequently Asked Questions

For help setting up and using Seagate Ultra Touch, review the frequently asked questions below. For additional support resources, go to [Seagate customer support](#).

## All users

### Problem: My file transfers are too slow

Q: Are both ends of the USB cable firmly attached?

A: Review troubleshooting tips for cable connections below:

- Check both ends of the USB cable and make sure that they are fully seated in their respective ports.
- Try disconnecting the cable, waiting 10 seconds, and then reconnecting it.
- Try a different USB cable.

Q: Is the device connected to a Hi-Speed USB 2.0 port on your computer or hub?

A: If your device is connected to a Hi-Speed 2.0 port or hub, the inferior performance is normal. Seagate Ultra Touch performance will improve when it is connected to a SuperSpeed USB 3.0 port. Otherwise, the device operates at slower USB transfer rates.

Q: Are there other USB devices connected to the same port or hub?

A: Disconnect other USB devices and see if the device's performance improves.

### Problem: I have an older computer with USB 2.0 ports

Q: Will my device's USB 3.0 cable work with my computer's USB 2.0 port?

A: Yes, the cable end that plugs into the computer (USB Type A) is compatible with both USB 3.0 and USB 2.0. However, the transfer rates are much slower with USB 2.0.

### Problem: I must use a USB hub for my USB devices

Q: Can I use my device with a USB hub?

A: Yes, the device can be connected to a USB hub. If you use a hub and encounter detection problems, slower than normal transfer rates, random disconnection from your computer or other unusual issues, try connecting the device directly to the computer's USB port.

Some USB hubs are less than efficient with power management, which can be problematic for connected devices. In such a case, consider trying a powered USB hub that includes a power cable.

Please note that USB 2.0 hubs limit your device's transfer rates to USB 2.0 speeds.

## **Problem: The provided USB cables are too short**

Q: Can I use my device with a longer cable?

A: Yes, provided it is certified according to USB standards. However, Seagate recommends using the cable shipped with your device for the best results. If you use a longer cable and experience problems with detection, transfer rates or disconnection, use the original cable included with your device. Note—The USB-C adapter included with Seagate Ultra Touch has not been tested with third-party USB cables and may not be compatible.

## **Problem: I'm receiving file transfer error messages**

Q: Did you get an "Error -50" message while copying to a FAT32 volume?

A: When copying files or folders from a computer to a FAT32 volume, certain characters in the names cannot be copied. These characters include, but are not limited to: ? < > / \ :

Check your files and folders to ensure that these characters are not in the names.

If this is a recurring problem or you cannot find files with incompatible characters, consider reformatting the drive to NTFS (Windows users) or HFS+ (Mac users). See [Optional Formatting and Partitioning](#).

Q: Did you get an error message telling you that the drive has been disconnected when coming out of sleep mode?

A: Ignore this message since the drive remounts on the desktop despite the pop-up. Seagate drives conserve power by spinning down when you set your computer to sleep mode. When the computer awakes from sleep mode, the drive may not have enough time to spin up, causing the pop-up to appear.

# **Windows**

## **Problem: The device icon doesn't appear in Computer**

Q: Is the device listed in Device Manager?

A: All drives appear in at least one place in Device Manager.

Type Device Manager in Search to launch it. Look in the Disk Drives section and, if necessary, click the Plus (+) icon to view the full list of devices. If you're uncertain that your drive is listed, safely unplug it and then reconnect it. The entry that changes is your Seagate device.

Q: Is your device listed next to an unusual icon?

A: Windows Device Manager usually provides information about failures with peripherals. While the Device Manager can assist with troubleshooting most problems, it may not display the exact cause or provide a precise solution.

An unusual icon next to the device can reveal a problem. For example, instead of the normal icon based on the type of device, it has an exclamation point, question mark or an X. Right click this icon and then choose Properties. The General tab provides a potential reason why the device is not working as expected.

## Mac

### Problem: The device icon does not appear on my desktop

Q: Is your Finder configured to hide hard drives on the desktop?

A: Go to Finder and then check [Preferences > General tab > Show these items on the desktop](#). Confirm that [Hard Disks](#) is selected.

Q: Is your device mounting in the operating system?

A: Open Disk Utility at [Go > Utilities > Disk Utility](#). If the device is listed in the left-hand column, check your Finder preferences to see why it is not displayed on the desktop (review the question above).

Q: Does your computer's configuration meet the minimum system requirements for use with this device?

A: Refer to the product packaging for the list of supported operating systems.

## Android

### Problem: The drive does not work on my Android mobile device

Q: Is your device on the supported Android mobile device list?

A: Please see [this support article](#) for a list of compatible devices.

Q: Are you using Seagate Ultra Touch or Seagate One Touch SSD with your compatible Android mobile device?

A: Only Seagate Ultra Touch and One Touch SSD are compatible with the Seagate Mobile Touch app.

Q: Are you using the Seagate Mobile Touch app with your compatible Seagate storage devices?

A: Seagate Mobile Touch is designed specifically to help you manage files on your drive and mobile device. You can find it on the Google Play Store or download it [here](#).

Q: Is your drive formatted for Android compatibility?

A: Use exFAT or FAT32 when connecting to compatible Android mobile devices. **Note**—FAT32 has a maximum partition size limit of 32GB.

# Regulatory Compliance

---

Product Name	Seagate Ultra Touch
--------------	---------------------

---

Regulatory Model Number	SRD0FV1
-------------------------	---------

---

## China RoHS 2



China RoHS 2 refers to the Ministry of Industry and Information Technology Order No. 32, effective July 1, 2016, titled Management Methods for the Restriction of the Use of Hazardous Substances in Electrical and Electronic Products. To comply with China RoHS 2, we determined this product's Environmental Protection Use Period (EPUP) to be 20 years in accordance with the Marking for the Restricted Use of Hazardous Substances in Electronic and Electrical Products, SJT 11364-2014.

中国 RoHS 2 是指 2016 年 7 月 1 日起施行的工业和信息化部令第 32 号“电力电子产品限制使用有害物质管理办法”。为了符合中国 RoHS 2 的要求，我们根据“电子电气产品有害物质限制使用标识”(SJT 11364-2014) 确定本产品的环保使用期 (EPUP) 为 20 年。

部件名称 Part Name	有害物质 Hazardous Substances					
	铅 (Pb)	汞 (Hg)	镉 (Cd)	六价铬 (Cr <sup>6+</sup> )	多溴联苯 (PBB)	多溴二苯醚 (PBDE)
固态驱动器 SSD	X	O	O	O	O	O
外接硬盘印刷电路板 Bridge PCBA	X	O	O	O	O	O
电源 (如果提供) Power Supply (if provided)	X	O	O	O	O	O
接口电缆 (如果提供) Interface cable (if provided)	X	O	O	O	O	O
其他外壳组件 Other enclosure components	O	O	O	O	O	O

本表格依据 SJ/T 11364 的规定编制。

This table is prepared in accordance with the provisions of SJ/T 11364-2014

O: 表示该有害物质在该部件所有均质材料中的含量均在 GB/T 26572 规定的限量要求以下。

O: Indicates that the hazardous substance contained in all of the homogeneous materials for this part is below the limit requirement of GB/T26572.

X: 表示该有害物质至少在该部件的某一均质材料中的含量超出 GB/T 26572 规定的限量要求。

X: Indicates that the hazardous substance contained in at least one of the homogeneous materials used for this part is above the limit requirement of GB/T26572.

## Taiwan RoHS

Taiwan RoHS refers to the Taiwan Bureau of Standards, Metrology and Inspection's (BSMI's) requirements in standard CNS 15663, Guidance to reduction of the restricted chemical substances in electrical and electronic equipment. Beginning on January 1, 2018, Seagate products must comply with the "Marking of presence" requirements in Section 5 of CNS 15663. This product is Taiwan RoHS compliant. The following table meets the Section 5 "Marking of presence" requirements.

台灣RoHS是指台灣標準局計量檢驗局(BSMI)對標準CNS15663要求的減排電子電氣設備限用化學物質指引。從2018年1月1日起, Seagate 產品必須符合CNS15663第5節「含有標示」要求。本產品符合台灣RoHS。下表符合第5節「含有標示」要求。

產品名稱：外接式固態硬碟，型號: SRD0FV1

Product Name: Seagate Ultra Touch, Model: SRD0FV1

單元 Unit	限用物質及其化學符號			Restricted Substance and its chemical symbol		
	鉛 (Pb)	汞 (Hg)	鎘 (Cd)	六價鉻 (Cr <sup>+6</sup> )	多溴聯苯 (PBB)	多溴二苯醚 (PBDE)
固態驅動器 SSD	—	○	○	○	○	○
外接硬盤印刷電路板 Bridge PCBA	—	○	○	○	○	○
電源 (如果提供) Power Supply (if provided)	—	○	○	○	○	○
傳輸線材 (如果提供) Interface cable (if provided)	—	○	○	○	○	○
其他外殼組件 Other enclosure components	○	○	○	○	○	○

備考 1. “○” 係指該項限用物質之百分比含量未超出百分比含量基準值。

Note 1. “○” indicates that the percentage content of the restricted substance does not exceed the percentage of reference value of presence.

備考 2. “—” 係指該項限用物質為排除項目。

Note 2. “—” indicates that the restricted substance corresponds to the exemption.